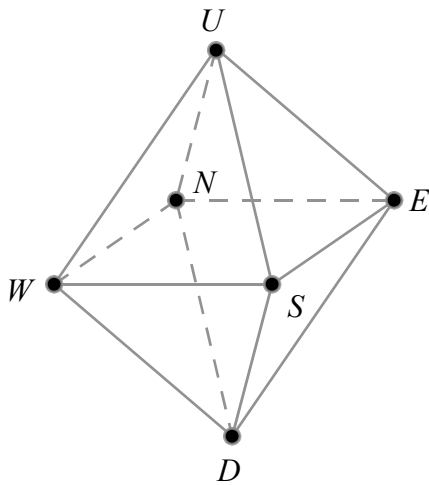


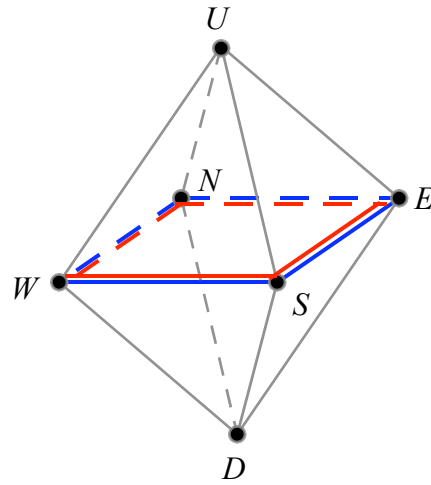
## Karl Schaffer's Platonic Metamorphosis

The performance begins with six people and six strings. The six people are identified as N, E, W, S, U and D. They form a regular octahedron in which every edge is doubled.

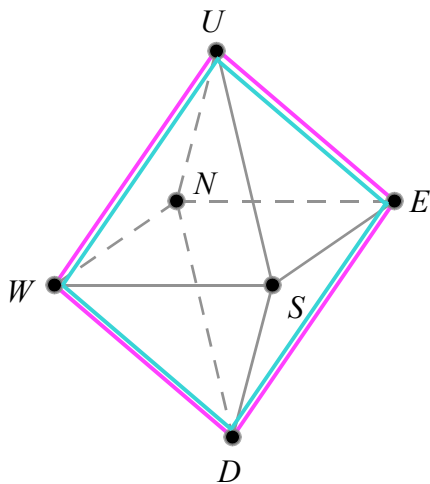
### The Regular Octahedron



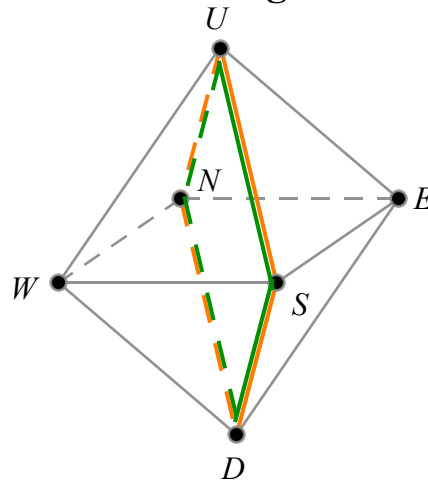
### First two strings



### Next two strings



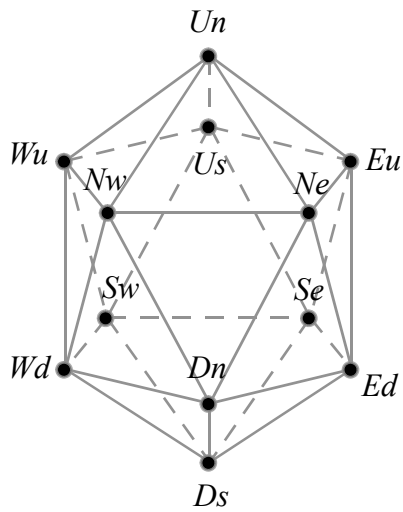
### Last two strings



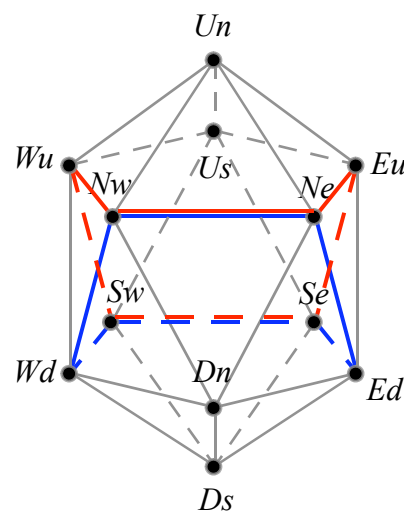


In the next stage, each person spreads her hands along one pair of strings and pulls part the other pair. N and S spread towards E and W, E and W spread towards U and D, and U and D spread towards N and S. The result is a regular icosahedron in which only the edges along which the hands were spread are doubled.

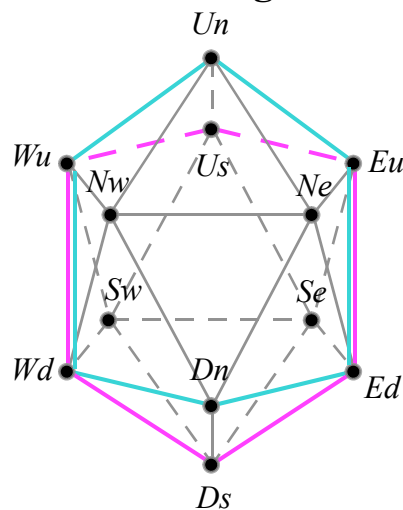
### The Regular Icosahedron



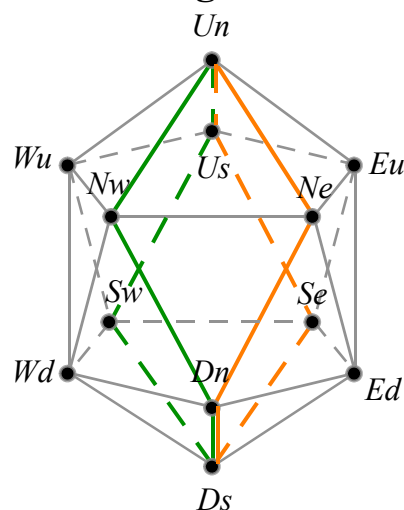
### First two strings



### Next two strings



### Last two strings

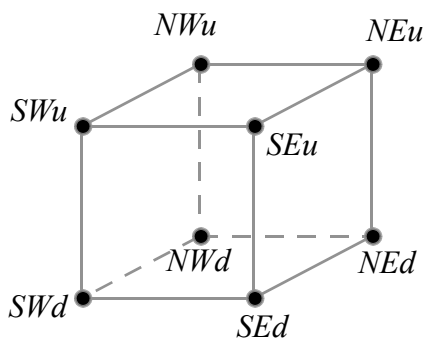




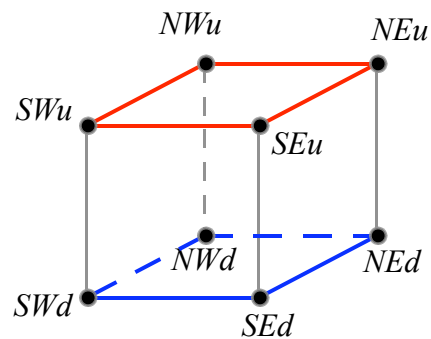


In the fourth stage, the original six, namely, N, E, W, S, U and D, drop out. The result is a cube with every edge doubled. Each string forms a face of the cube.

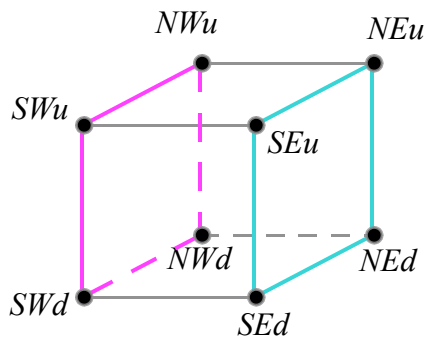
## The Cube



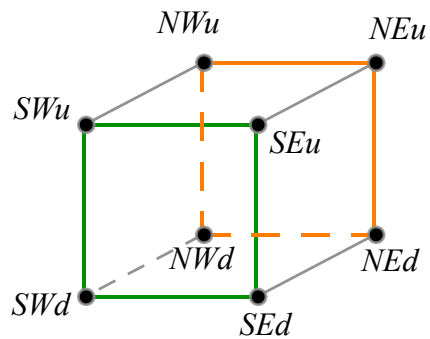
## First two strings



## Next two strings



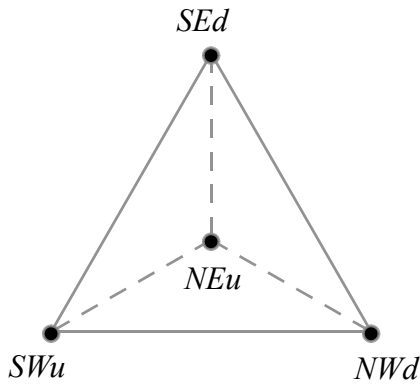
## Last two strings



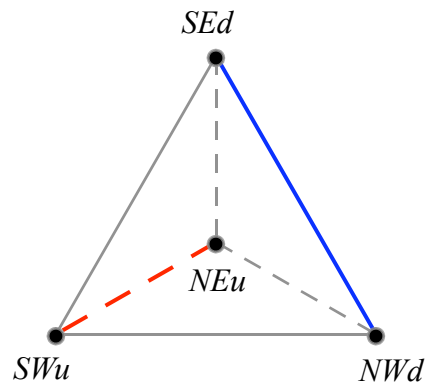


In the final stage, NE and SW let go of their hands toward D while NW and SE let go of their hands towards U. The result is a regular tetrahedron in which every edge is doubled and formed with a single string.

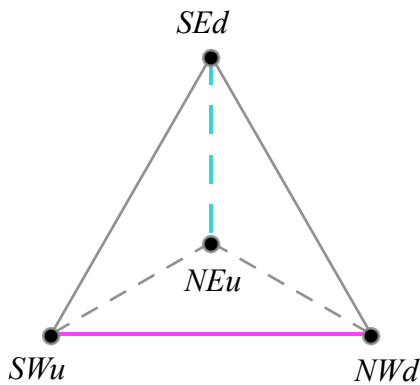
### The Regular Tetrahedron



### First two strings



### Next two strings



### Last two strings

